

EVERBRITE

APPLICATION INSTRUCTIONS

Instant Rust Accelerator

Instant Rust Accelerator creates real rust on iron based metals; for use on **Corten, Iron and Steel**. The rusted finish is durable for indoor and outdoor use. Sealing the rusted finish with an Everbrite Coating will then stop the rust from dripping, staining or transferring onto other surfaces.

PROTECT YOUR CLOTHING & WEAR EYE PROTECTION

Test First

We recommend testing to familiarize you with the process; and importantly before applying to any large surface or valuable object for the first time as not all steel metals are the same.

Prepare the Surface

- Clean the metal surface of any loose debris, dirt, grease, oil, paint, lacquer or varnish.
- Mill scale on iron is always a concern and must be removed.
- To produce deeper rust, lightly sand the metal to scuff the surface.

Solution Application

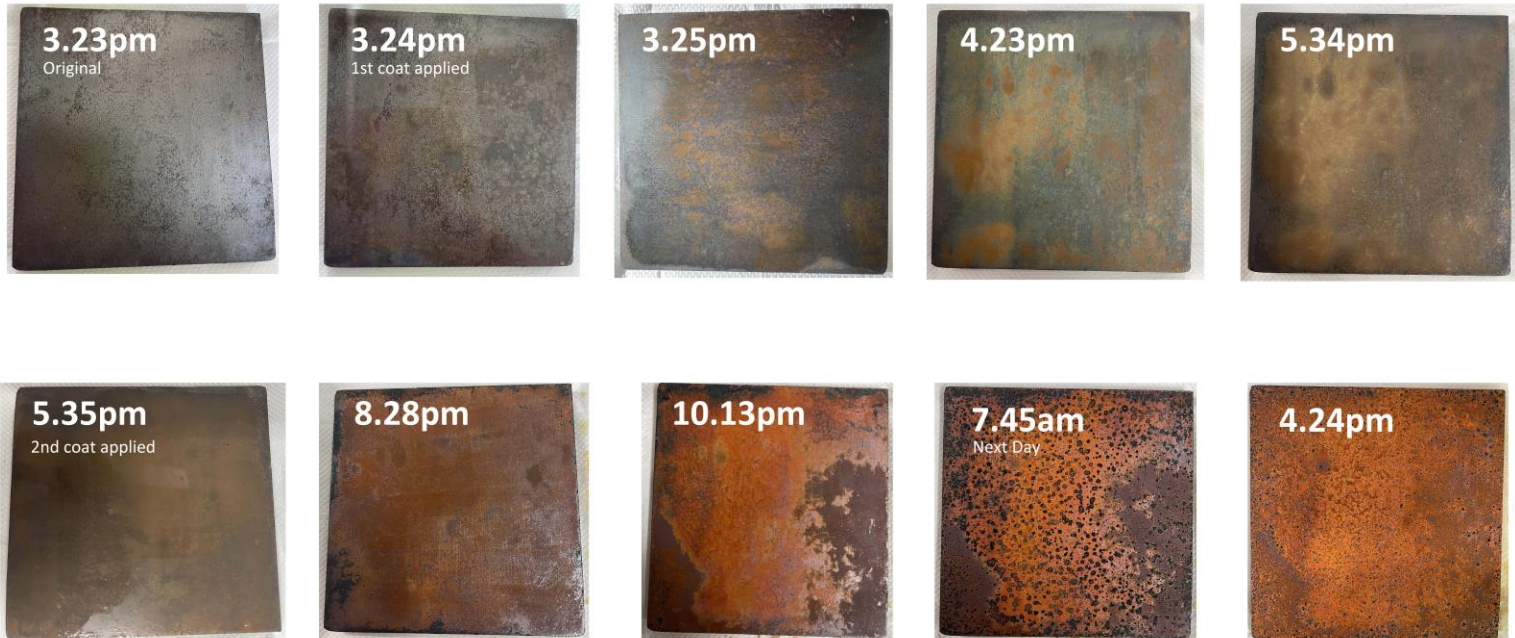
Varying shades of rust colours can be developed based on the amount of solution applied. Some areas that have heavier amounts of the solution will develop differently. Once applied, the rust finish will start to appear within 30 minutes but additional time for oxidation as well as more rust solution coats will bring out more colours. The colouration and rusting oxidation process will develop over several hours and will continue for 72 hours.

1. Apply the rust solution using a sponge brush, clean paint brush, sponge, or spray the solution onto the surface.
 - We recommend using a foam brush or otherwise inexpensive brush. The solution is corrosive, therefore expensive brushes are not recommended.
 - For larger projects, you may prefer to spray it on. Use inexpensive plastic pump spray bottles as these are an effective way to apply the solution. Small finger or trigger pump bottles work well.
 - **Note:** Because of the solution's natural corrosive properties, it can quickly eat through the most expensive sprayers therefore we do not recommend their use.
 - **Caution:** If it is being sprayed on we recommend that you are in a well-ventilated area wearing a respirator or suitable mask, protective eyewear and gloves.
2. Apply a light first coat of **Instant Rust Accelerator**.
3. Allow to dry for about 1 to 2 hours between coats.
4. Apply additional coats until you achieve the desired look. Apply 2 to 3 coats.
5. Allow the rust to mature for 72 hours before acid neutralizing the surface and coating application.
6. Refer picture overleaf: **Time line Test** to see the solution developing rust on steel.

Clean Up

Clean up tools with water.

Time line Test to see the solution developing rust on steel over 24 hours.



Acid Neutralising and Sealing the Rusted Look with an Everbrite Protective Coating

After 72 hours; and before applying the Everbrite Protective Coating the surface must be neutralized and cleaned of acids and salts. The Rust Accelerator has a PH level of 4 to 4.5 therefore the surface will be acidic.

For full instructions for completing directions on Neutralising Acids, Solvent Wiping, and Coating Application refer to the **Instructions for Coating Rusted Metals**.

- Use **Everbrite EZPrep Neutralising Concentrate** (mixed 1:4 with clean water) or 1 cup of baking soda to 4 litres of water to neutralize the acid from rusted surface.
- Rinse twice with plain water to ensure the neutraliser is completely rinsed off.
- Note: The rusted metal must be completely dry before application of an Everbrite Coating. Sealing the rusted finish with an Everbrite Coating will stop the rust from dripping, staining or transferring onto other surfaces.

CAUTION:

Instant Rust Accelerator **is toxic to aquatic life** with long lasting effects. Avoid release into the environment. Dispose of contents or container in accordance with National Regulations. **Protect rusted steel fish tanks and water fountains with Everbrite UV Protective Clear coat.**

DESCRIPTION OF FIRST AID MEASURES

General advice: Get medical attention if irritation or other symptoms occur. Before seeking medical attention remove contaminated clothing and shoes.

Inhalation: If inhaled as aerosol, remove to fresh air. If breathing is difficult, give oxygen. If not breathing, give artificial respiration.

Skin contact: For skin contact, immediately wipe away excess material. Use a waterless hand cleaner to remove as much of the remaining material as possible. Wash with soap and water.

Eye contact: If contact with eyes, immediately hold eyelids apart and flush with plenty of water for at least 15 min. Keep eyelids well open to rinse the whole eye surface and eyelids with water.

Ingestion: For ingestion, if conscious, give several glasses of water but do not induce vomiting. If vomiting does occur, give additional fluids. Get medical attention. Designate the product. Show label if possible.

NEW ZEALAND EPA Group Standard Approval: Metal Industry Products (Subsidiary Hazard) Group Standard 2020 HSR002612